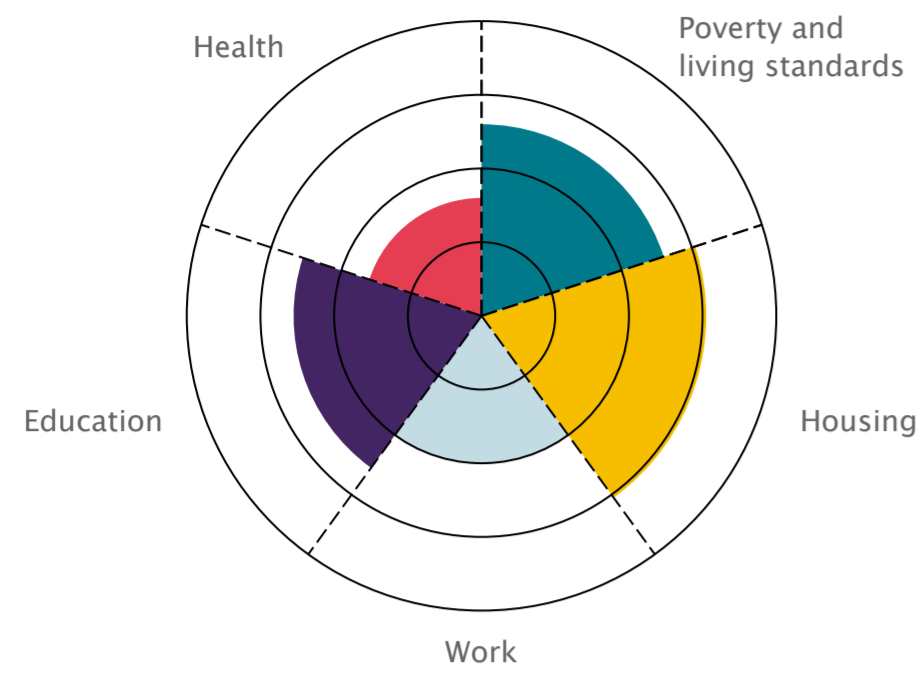


London's Poverty Profile provides evidence on and insight into poverty and inequality in London. It shines a light on these issues to prompt action from local and national government, the third sector, faith groups, practitioners, experts, businesses, the public and indeed anyone who cares about making London a fairer city to live in. This factsheet draws together insights specifically for Bexley from the wider set of indicators published in London's Poverty Profile.

For details of the data sources and methods used please see <https://trustforlondon.org.uk/data/boroughs/overview-of-london-boroughs/>

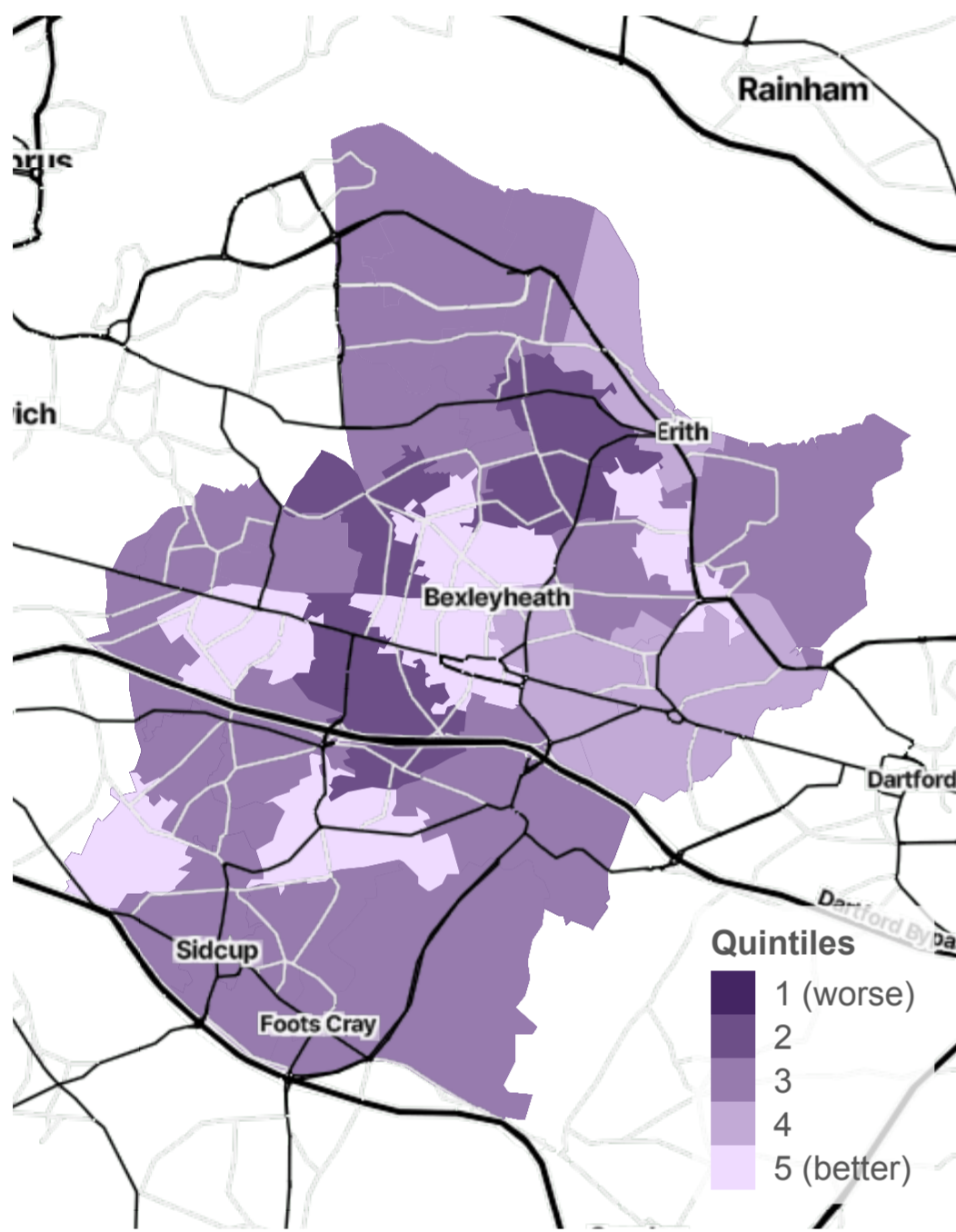


The chart above summarises the boroughs' indicators across each of our themes. The center represents worse performance, outer rings better

Key Points

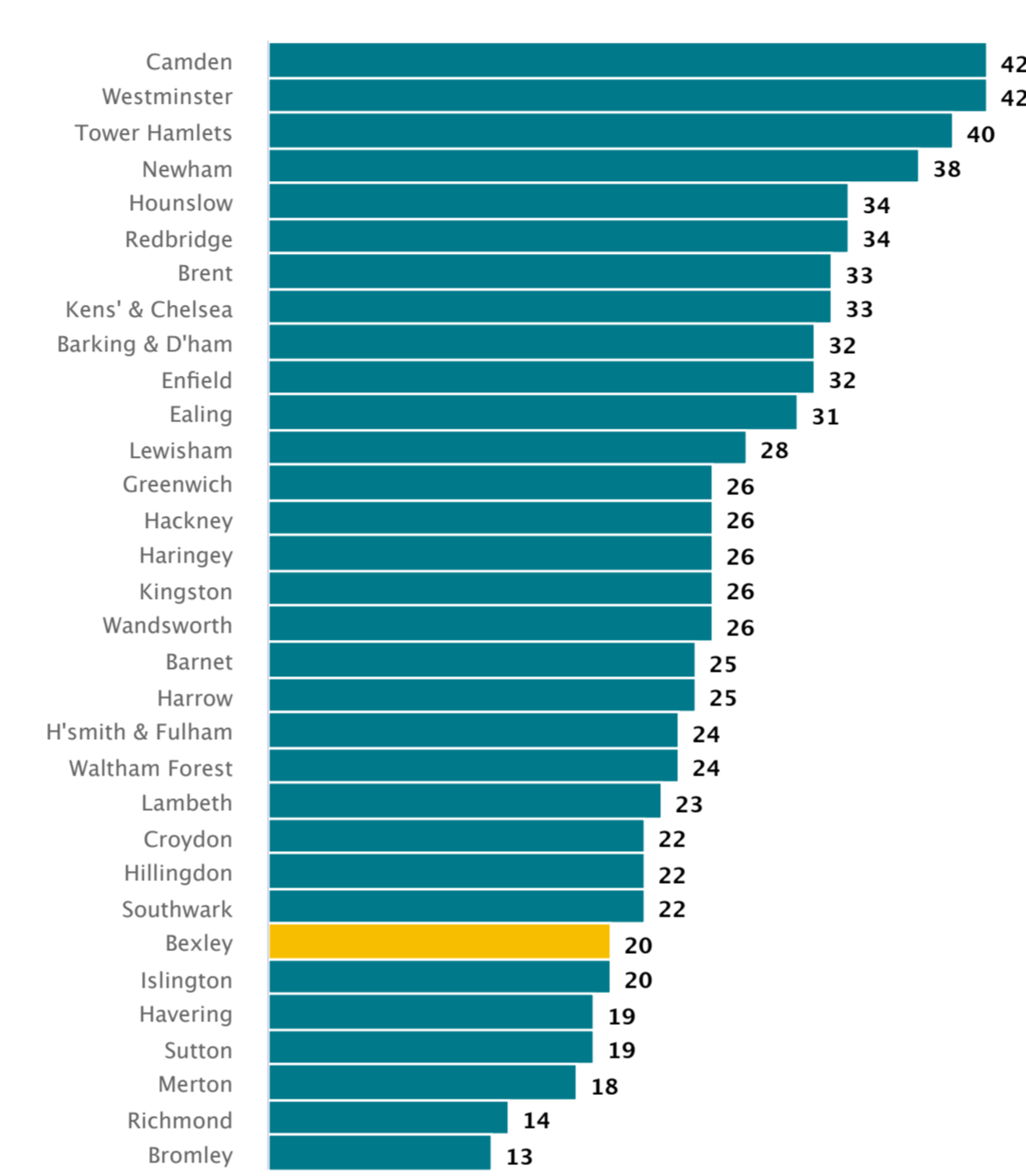
- In 2023/24, 20% of people in the borough lived in households with an income of less than 60% the UK median after housing costs have been subtracted. This was around the same as the average London Borough.
- 28% of children in the borough lived in households with an income of less than 60% the UK median after housing costs have been subtracted in 2023/24. This was around the same as the average London Borough.
- In Bexley, 20% of residents were estimated to be earning below the Living Wage in 2024. This was around the same as the average London Borough.
- Bexley owed 0.17 per 1,000 households a main homelessness duty in 2025 Q1, better than the average London Borough.
- The unemployment rate for 2024 Q4 was 3% in Bexley, better than the average London Borough.
- Infant mortality rates per 1,000 live births in Bexley were around the same as the average London Borough at 4.2 in 2023
- GCSE attainment was worse than the average London Borough in Bexley, with 70.8% of students achieving grades 9-4 (A*-C under the old grading system) in GCSE English and Maths in 2023/24

Income estimates 2020



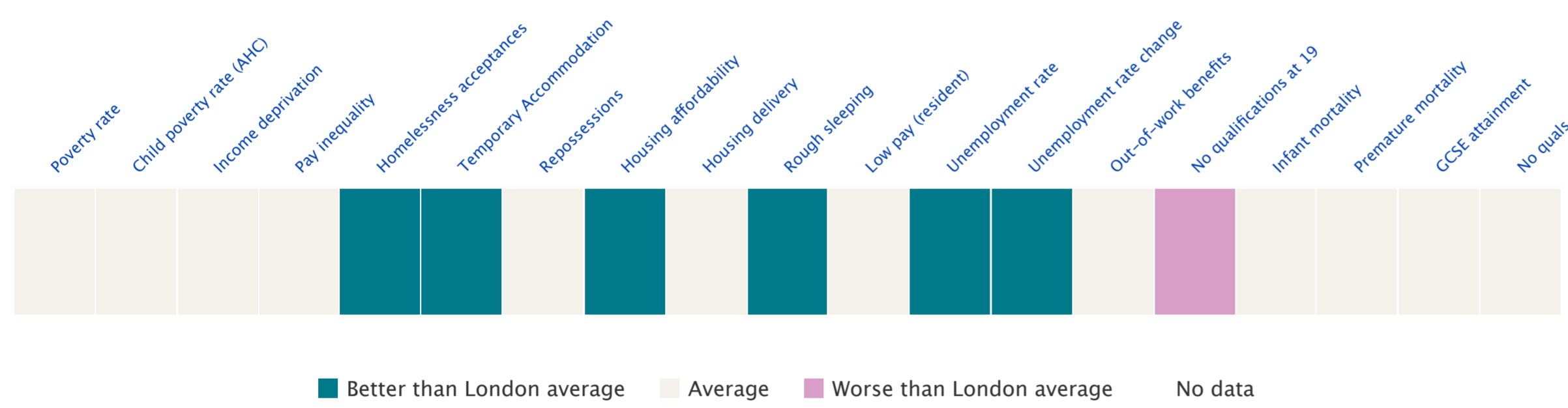
Source: MSOA Income estimates 2020, ONS

Poverty rate 2023/24



Source: Households below average income 5 year averages to 2023/24, DWP

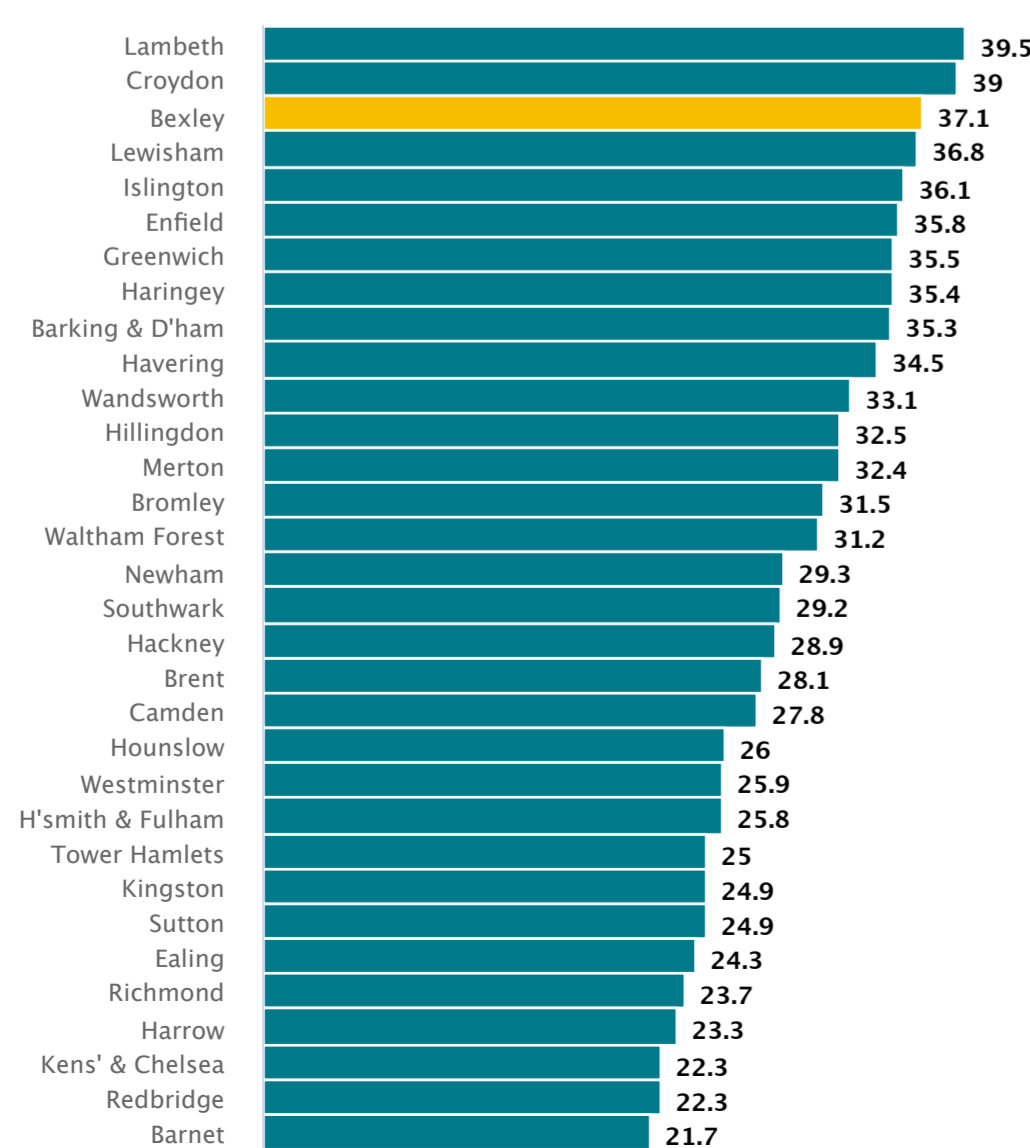
Bexley ratings across key indicators



Looking across all the indicators collected at Borough level for the London Poverty Profile, Bexley did worst for GCSE attainment - grades 9-4 in English and Maths by London borough, and best for Homelessness duties owed by London boroughs.

Worse for:

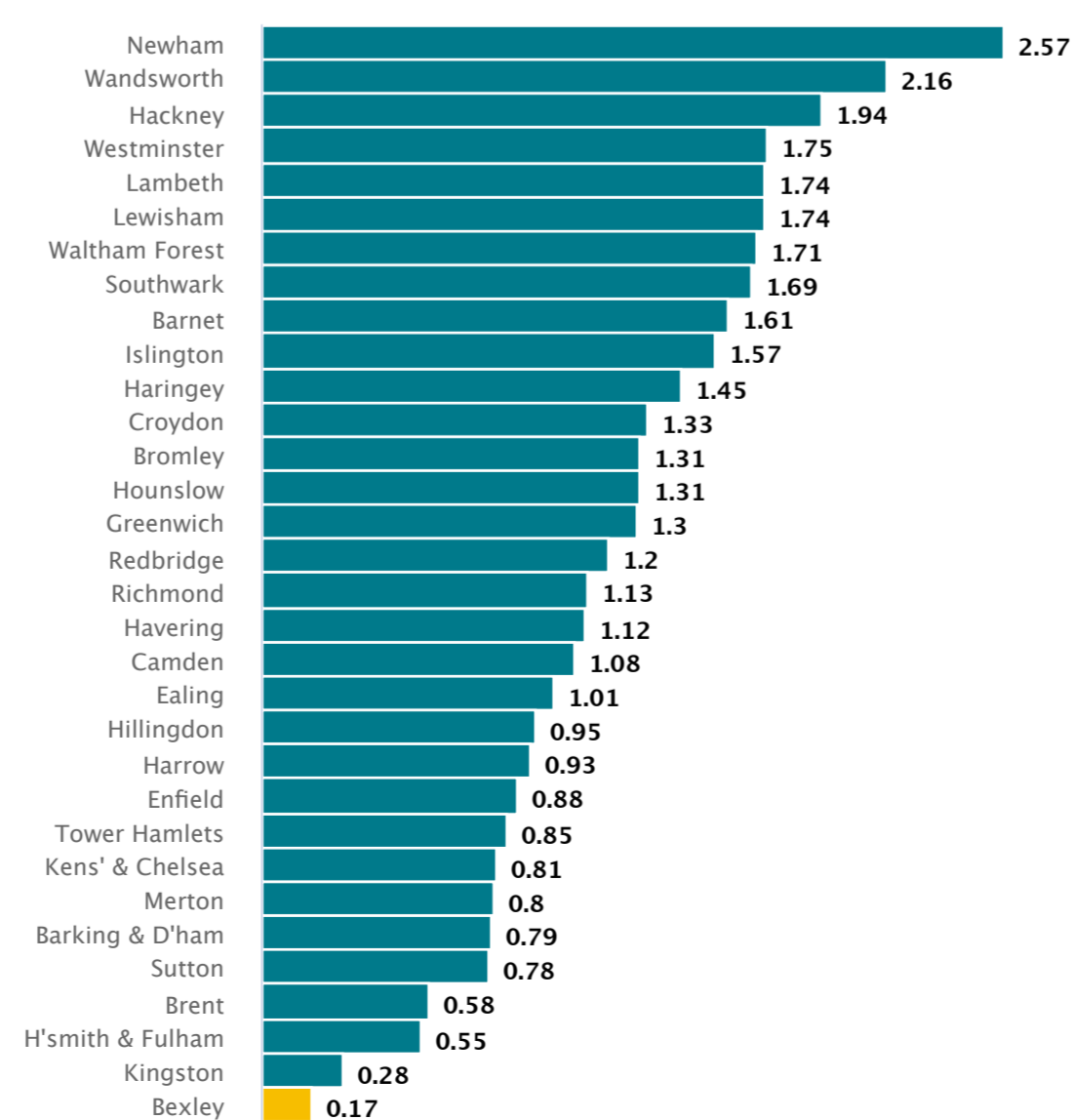
19 year olds without level 3 qualifications 2023/24



Source: Key stage 4 performance, Academic Year 2023/24, Department for Education

Better for:

Main homelessness duty owed per 1,000 households 2025 Q1



Source: Initial assessments of statutory homelessness duties owed, Department for Levelling Up, Housing & Communities and Ministry of Housing, Communities & Local Government