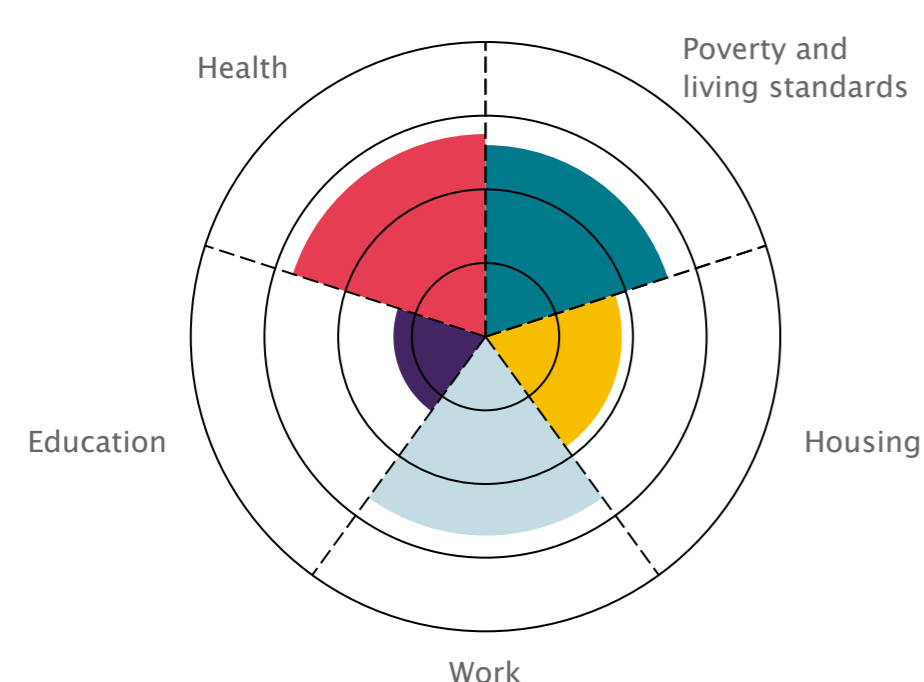


London's Poverty Profile provides evidence on and insight into poverty and inequality in London. It shines a light on these issues to prompt action from local and national government, the third sector, faith groups, practitioners, experts, businesses, the public and indeed anyone who cares about making London a fairer city to live in. This factsheet draws together insights specifically for Kensington and Chelsea from the wider set of indicators published in London's Poverty Profile.

For details of the data sources and methods used please see <https://trustforlondon.org.uk/data/boroughs/overview-of-london-boroughs/>

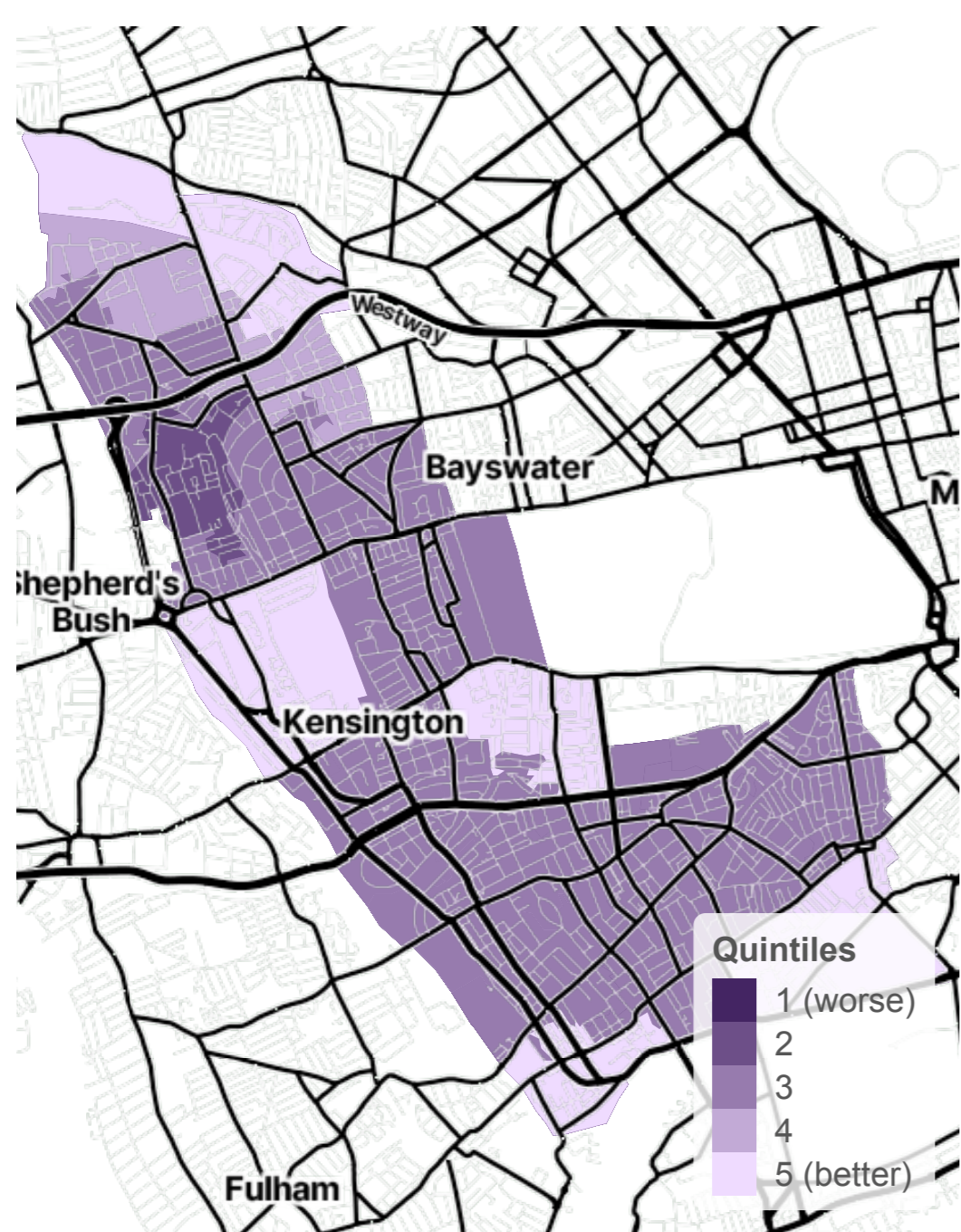


The chart above summarises the boroughs' indicators across each of our themes. The center represents worse performance, outer rings better

## Key Points

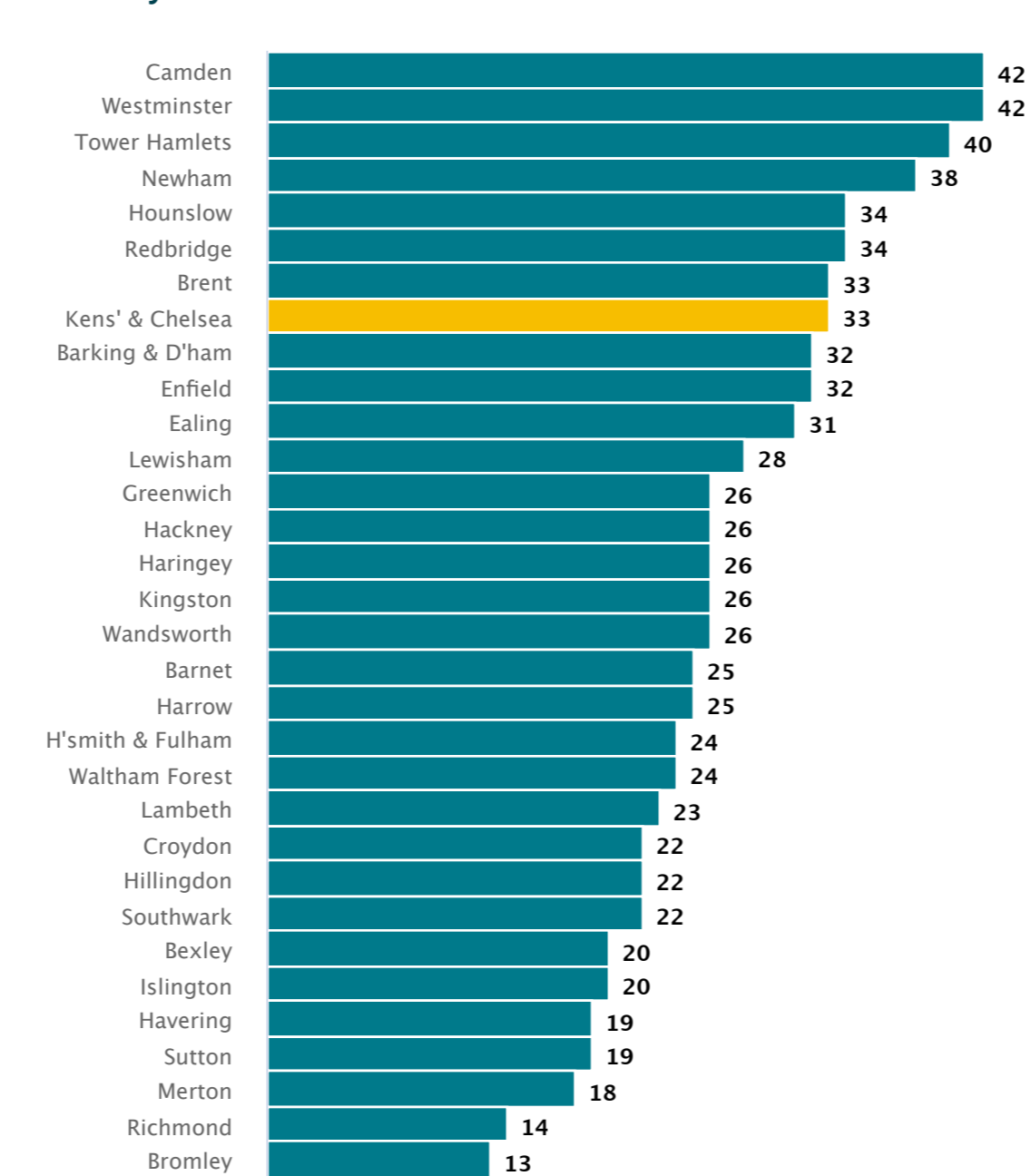
- In 2023/24, 33% of people in the borough lived in households with an income of less than 60% the UK median after housing costs have been subtracted. This was around the same as the average London Borough.
- 29% of children in the borough lived in households with an income of less than 60% the UK median after housing costs have been subtracted in 2023/24. This was around the same as the average London Borough.
- In Kensington and Chelsea, 10.4% of residents were estimated to be earning below the Living Wage in 2024. This was better than the average London Borough.
- Premature death rates per 100,000 in Kensington and Chelsea were better than the average London Borough at 224 in 2023
- GCSE attainment was better than the average London Borough in Kensington and Chelsea, with 77.6% of students achieving grades 9-4 (A\*-C under the old grading system) in GCSE English and Maths in 2023/24
- Affordable, social and other discounted housing completions were worse than in Kensington and Chelsea the average London Borough, with 39 delivered in 2020/21 - 2022/23.
- Average rent for a one-bedroom house or flat on the private market was at least 73 percent of median pre-tax pay in London in October 2022 to September 2023. This was worse than the average London Borough.

## Income estimates 2020



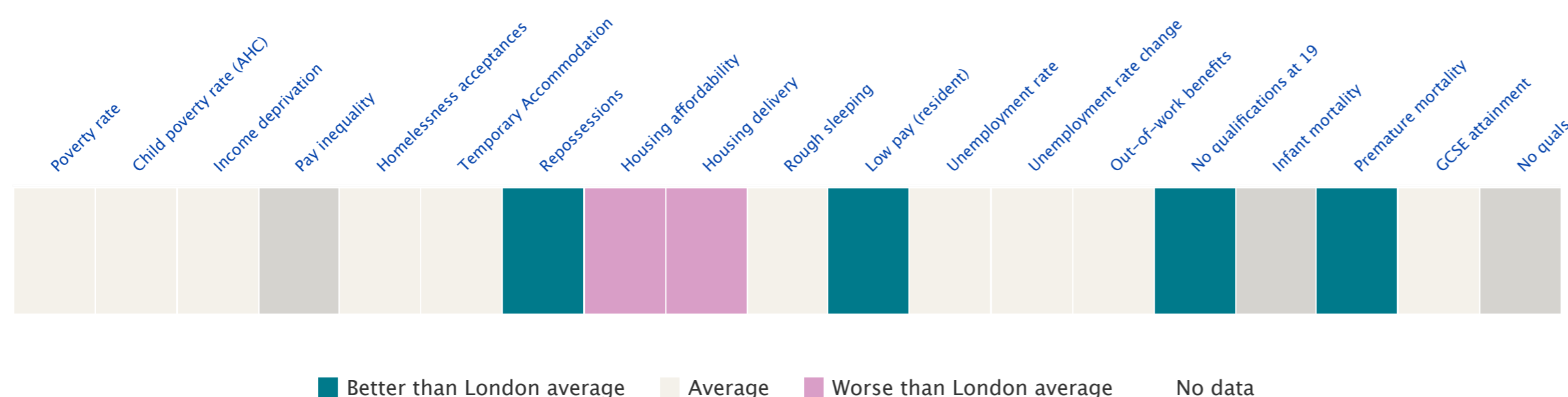
Source: MSOA Income estimates 2020, ONS

## Poverty rate 2023/24



Source: Households below average income 5 year averages to 2023/24, DWP

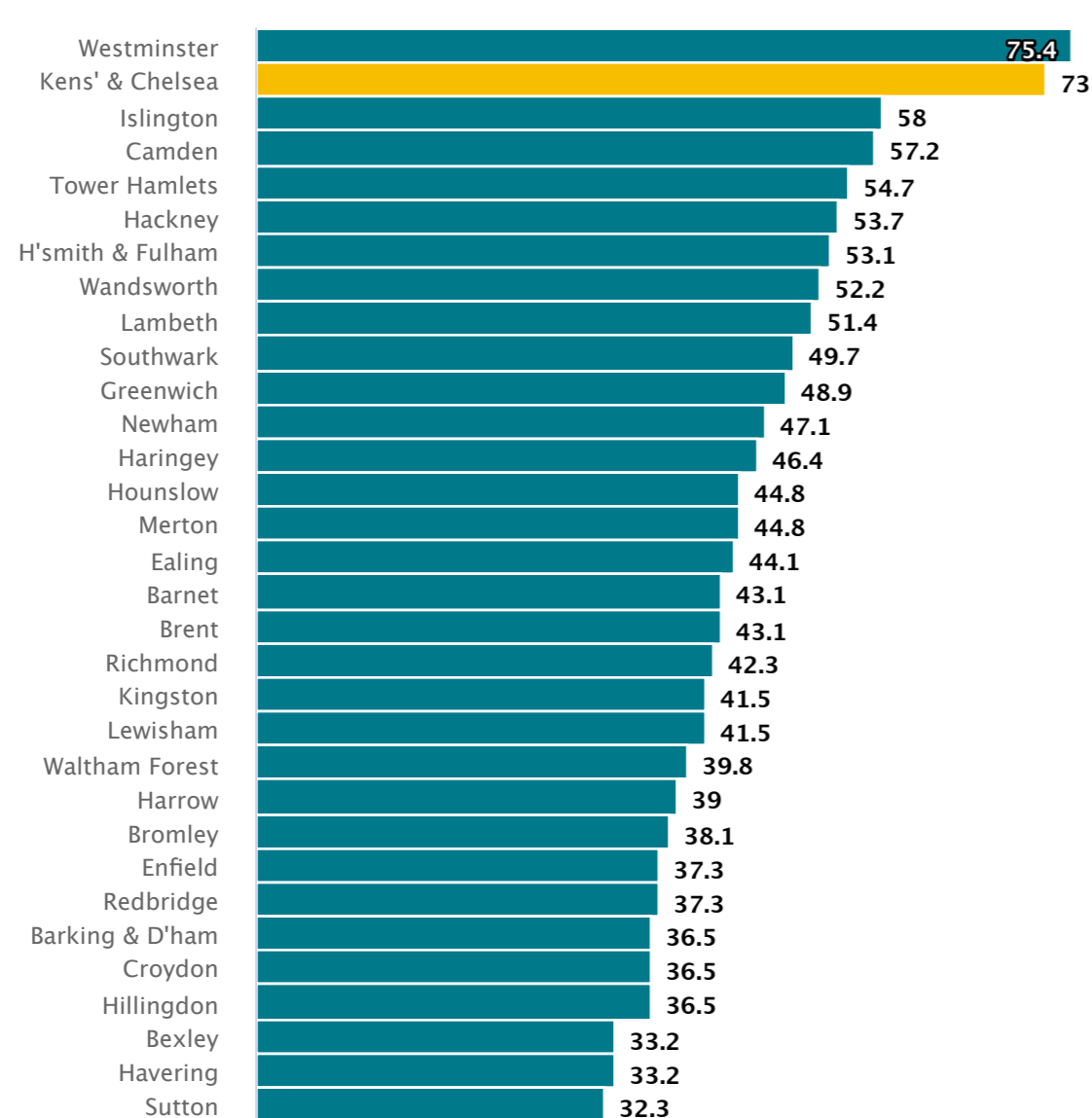
## Kensington and Chelsea ratings across key indicators



Looking across all the indicators collected at Borough level for the London Poverty Profile, Kensington and Chelsea did worst for , and best for .

### Worse for:

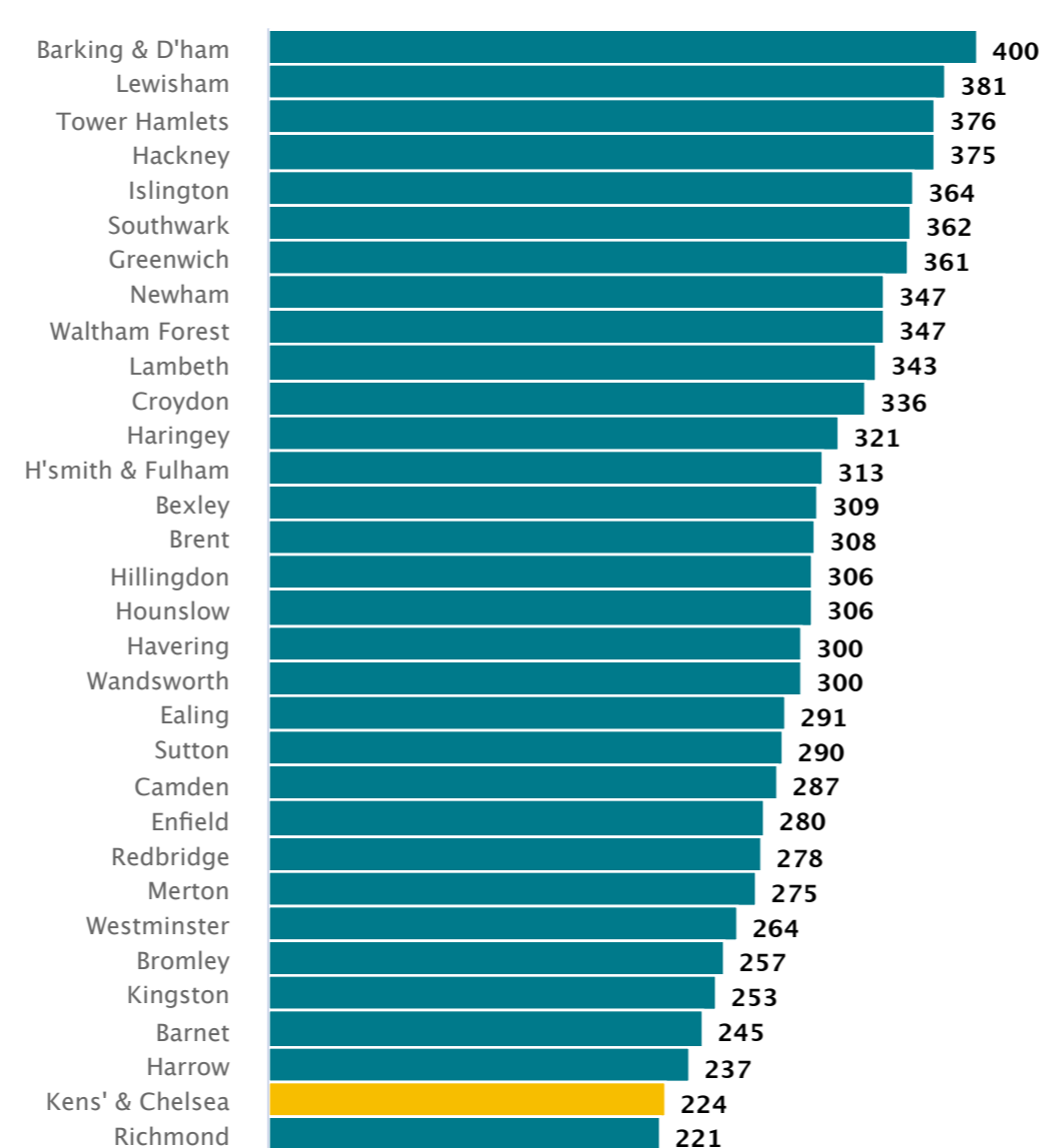
Median rent as a percentage of median pay  
October 2022 to September 2023



Source: Private rental market statistics (October 2022 to September 2023), ONS and Annual Survey of Hours and Earnings (2023), ONS via NOMIS

### Better for:

Deaths of <75 year olds per 100,000  
2023



Source: Office for Health Improvement and Disparities, via Public Health England